

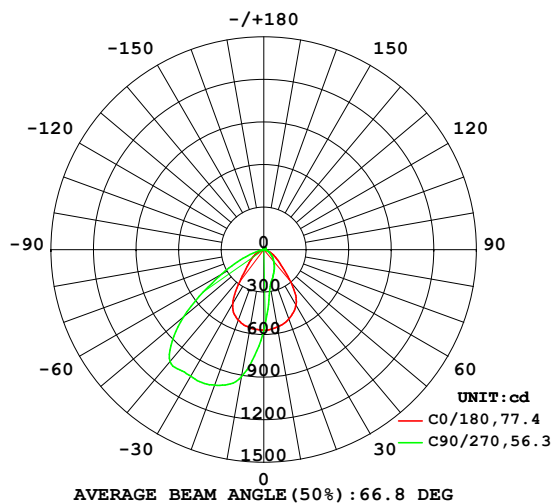
TLO020-51 36V500mA CXA1820-30G-H-NOY 66.8D 3000K CRI90 NA

## LUMINAIRE PHOTOMETRIC TEST REPORT

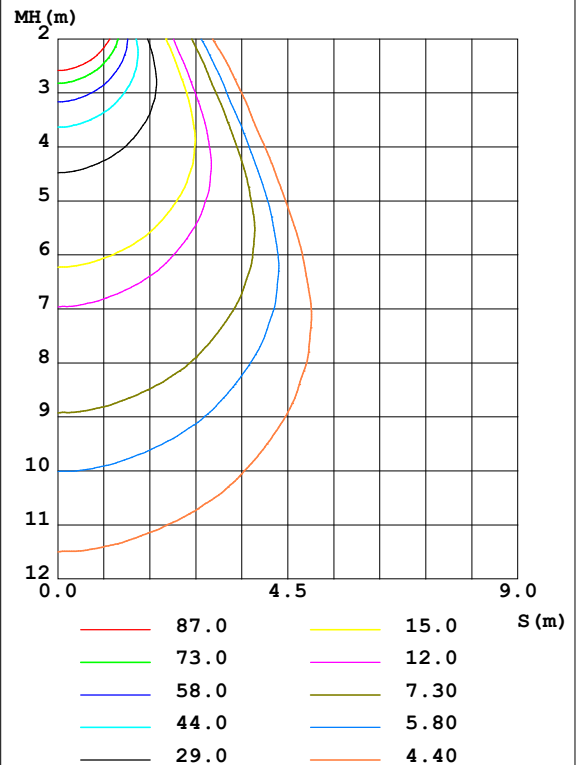
NAME: TLO020-51	TYPE: 66.8D	WEIGHT: 1
SPEC.: 3000K CRI90	DIM.:	SERIAL No.:
MFR.:	SUR.: 72	Shielding Angle:

DATA OF LAMP		PHOTOMETRIC DATA Eff: 70.59 lm/W			
MODEL		Imax(cd)	1062	S/MH(C0/180)	1.07
NOMINAL POWER(W)	20	LOR(%)	100.0	S/MH(C90/270)	1.84
RATED VOLTAGE(V)	120	TOTAL FLUX(lm)	1396.1	$\eta$ UP,DN(C0-180)	1.6, 20.4
NOMINAL FLUX(lm)	1396.1	CIE CLASS	DIRECT	$\eta$ UP,DN(C180-360)	0.7, 77.3
LAMPS INSIDE	1	$\eta$ up(%)	2.3	CIBSE SHR NOM	1.00
TEST VOLTAGE(V)	120	$\eta$ down(%)	97.7	CIBSE SHR MAX	1.10

LUMINOUS INTENSITY DISTRIBUTION DIAGRAM



C0 PLANE ISOLUX DIAGRAM (UNIT: lx)



C Range: 0 - 360DEG  
C Interval: 22.5DEG  
Test Speed: HIGH  
Temperature: 28DEG  
Operators: CJY  
Test Date: 2024-08-28

$\gamma$  Range: 0 - 180DEG  
 $\gamma$  Interval: 1.0DEG  
Test System: EVERFINE GO-2000B\_V1 SYSTEM V2.0.401  
Humidity: 65.0%  
Test Distance: 5.190m [K=1.0000]  
Remarks:

TL0020-51 36V500mA CXA1820-30G-H-NOY 66.8D 3000K CRI90 NA

## ZONAL FLUX DIAGRAM

ZONAL FLUX DIAGRAM:

$\gamma$	C0	C45	C90	C135	C180	C225	C270	C315	$\gamma$	$\Phi$ zone	$\Phi$ total	%lum, lamp
10	554.6	317.0	264.1	327.2	559.3	820.7	909.8	812.3	0- 10	54.26	54.26	3.89,3.89
20	520.2	213.4	196.5	218.8	529.5	961.3	1017	941.2	10- 20	162.8	217.0	15.5,15.5
30	453.0	163.8	149.5	170.7	439.2	957.2	1031	915.3	20- 30	258.0	475.0	34,34
40	295.0	121.1	112.0	127.5	222.7	860.4	1029	819.4	30- 40	311.5	786.5	56.3,56.3
50	149.0	84.16	79.12	89.50	127.0	560.5	741.4	508.3	40- 50	283.4	1070	76.6,76.6
60	83.26	50.80	50.36	55.68	68.95	231.2	340.8	196.6	50- 60	183.0	1253	89.7,89.7
70	35.83	23.90	24.82	27.28	25.96	67.88	103.6	56.64	60- 70	84.01	1337	95.8,95.8
80	9.143	6.982	7.668	8.624	4.665	8.140	10.50	5.716	70- 80	24.27	1361	97.5,97.5
90	0.5754	1.378	1.948	1.386	0.6235	0.4489	0.4653	0.5349	80- 90	2.879	1364	97.7,97.7
100	1.053	3.043	4.196	3.051	1.191	0.7298	0.7226	0.8482	90-100	1.452	1366	97.8,97.8
110	2.023	5.350	7.136	5.421	2.277	1.134	1.087	1.311	100-110	2.622	1368	98,98
120	3.438	7.804	10.19	8.101	3.744	1.696	1.555	1.960	110-120	3.947	1372	98.3,98.3
130	5.039	9.724	12.70	10.41	5.382	2.523	2.136	2.970	120-130	5.009	1377	98.6,98.6
140	6.611	10.60	14.07	11.88	6.890	3.755	3.007	4.438	130-140	5.452	1383	99,99
150	7.807	10.75	14.10	12.65	7.934	5.453	4.634	6.360	140-150	5.169	1388	99.4,99.4
160	8.559	11.18	13.91	13.10	8.834	7.520	7.119	8.621	150-160	4.313	1392	99.7,99.7
170	9.898	11.64	13.22	13.45	10.24	9.485	9.889	10.90	160-170	2.984	1395	99.9,99.9
180	11.05	11.37	12.12	12.85	11.08	11.39	12.14	12.88	170-180	1.098	1396	100,100
DEG	LUMINOUS INTENSITY:cd									UNIT:lm		

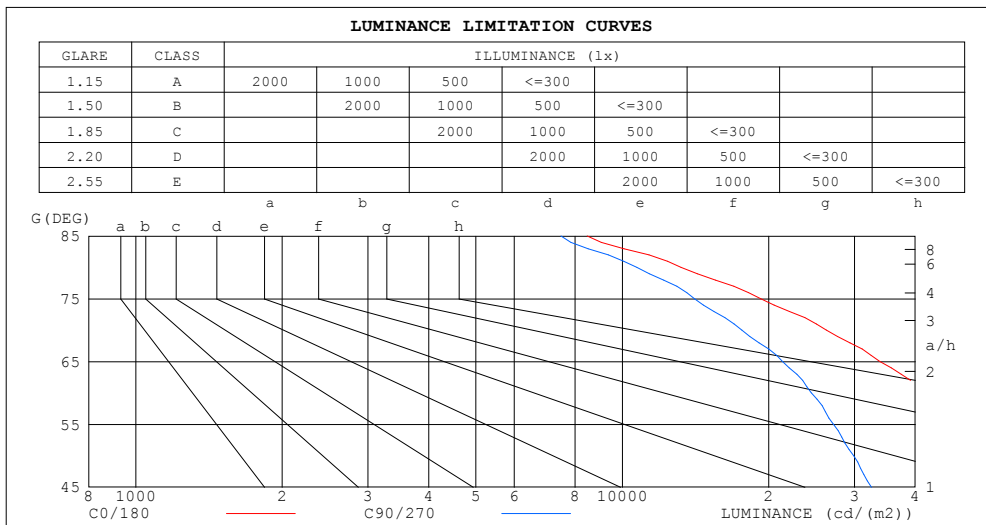
C Range: 0 - 360DEG  
C Interval: 22.5DEG  
Test Speed: HIGH  
Temperature:28DEG  
Operators:CJY  
Test Date:2024-08-28

$\gamma$  Range: 0 - 180DEG  
 $\gamma$  Interval: 1.0DEG  
Test System:EVERFINE GO-2000B\_V1 SYSTEM V2.0.401  
Humidity:65.0%  
Test Distance:5.190m [K=1.0000]  
Remarks:

TLO020-51 36V500mA CXA1820-30G-H-NOY 66.8D 3000K CRI90 NA

### LUMINANCE LIMITATION CURVES

NAME: TLO020-51	TYPE: 66.8D	WEIGHT: 1
SPEC.: 3000K CRI90	DIM.:	SERIAL No.:
MFR.:	SUR.: 72	Shielding Angle:



LUMINANCE cd/(m2)		
G (DEG)	C0/180	C90/270
85	8475	7479
80	13213	10720
75	19259	14068
70	26290	17614
65	33857	21359
60	41787	24450
55	49173	27178
50	58164	29882
45	72645	32534

C Range: 0 - 360DEG  
C Interval: 22.5DEG  
Test Speed: HIGH  
Temperature: 28DEG  
Operators: CJY  
Test Date: 2024-08-28

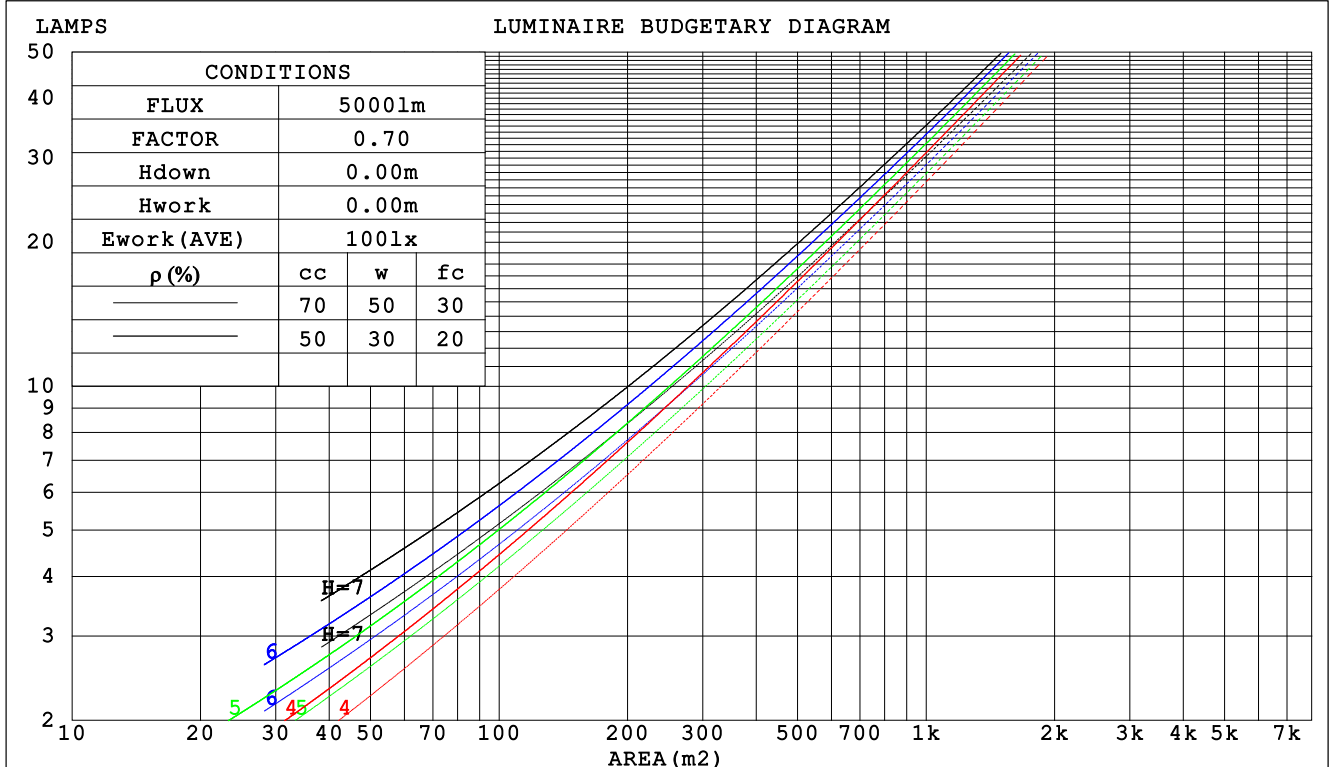
γ Range: 0 - 180DEG  
γ Interval: 1.0DEG  
Test System: EVERFINE GO-2000B\_V1 SYSTEM V2.0.401  
Humidity: 65.0%  
Test Distance: 5.190m [K=1.0000]  
Remarks:

TLO020-51 36V500mA CXA1820-30G-H-NOY 66.8D 3000K CRI90 NA

## CU AND LUMINAIRE BUDGETARY ESTIMATE DIAGRAM

NAME: TLO020-51	TYPE: 66.8D	WEIGHT: 1
SPEC.: 3000K CRI90	DIM.:	SERIAL No.:
MFR.:	SUR.: 72	Shielding Angle:

$\rho_{cc}$	80%			70%			50%			30%			10%			0
$\rho_w$	50%	30%	10%	50%	30%	10%	50%	30%	10%	50%	30%	10%	50%	30%	10%	0
$\rho_{fc}$	20%			20%			20%			20%			20%			0
RCR	RCR:Room Cavity Ratio			Coefficients of Utilization(CU)												
0.0	1.19	1.19	1.19	1.15	1.15	1.15	1.10	1.10	1.10	1.05	1.05	1.05	.00	.00	.00	.98
1.0	1.07	1.03	1.00	1.04	1.01	.98	.00	.97	.95	.95	.93	.92	.92	.90	.88	.86
2.0	.95	.90	.85	.93	.88	.84	.89	.85	.81	.86	.82	.79	.83	.80	.77	.75
3.0	.85	.78	.73	.83	.77	.72	.80	.75	.70	.77	.73	.69	.75	.71	.67	.65
4.0	.76	.69	.63	.75	.68	.62	.72	.66	.61	.70	.65	.60	.68	.63	.59	.57
5.0	.69	.61	.55	.68	.60	.55	.66	.59	.54	.63	.58	.53	.61	.56	.52	.50
6.0	.63	.54	.49	.62	.54	.48	.60	.53	.48	.58	.52	.47	.56	.51	.47	.45
7.0	.57	.49	.43	.56	.49	.43	.54	.48	.43	.53	.47	.42	.51	.46	.42	.40
8.0	.52	.44	.39	.51	.44	.39	.50	.43	.38	.49	.42	.38	.47	.42	.38	.36
9.0	.48	.40	.35	.47	.40	.35	.46	.39	.35	.45	.39	.34	.44	.38	.34	.32
10.0	.44	.37	.32	.44	.37	.32	.43	.36	.32	.42	.36	.31	.41	.35	.31	.29



C Range: 0 - 360DEG  
C Interval: 22.5DEG  
Test Speed: HIGH  
Temperature: 28DEG  
Operators: CJY  
Test Date: 2024-08-28

$\gamma$  Range: 0 - 180DEG  
 $\gamma$  Interval: 1.0DEG  
Test System: EVERFINE GO-2000B\_V1 SYSTEM V2.0.401  
Humidity: 65.0%  
Test Distance: 5.190m [K=1.0000]  
Remarks:

TLO020-51 36V500mA CXA1820-30G-H-NOY 66.8D 3000K CRI90 NA

### WEC AND CCEC

NAME: TLO020-51	TYPE: 66.8D	WEIGHT: 1
SPEC.: 3000K CRI90	DIM.:	SERIAL No.:
MFR.:	SUR.: 72	Shielding Angle:

pcc	80%			70%			50%			30%			10%			0	
pw	50%	30%	10%	50%	30%	10%	50%	30%	10%	50%	30%	10%	50%	30%	10%	0	
pfc	20%			20%			20%			20%			20%			0	
RCR	RCR:Room Cavity Ratio						Wall Exitance Coefficients (WEC)										
0.0																	
1.0	.246	.140	.044	.238	.136	.043	.224	.129	.041	.211	.122	.039	.199	.115	.037		
2.0	.241	.132	.040	.234	.129	.040	.221	.123	.038	.210	.118	.037	.199	.113	.036		
3.0	.229	.122	.037	.223	.120	.036	.212	.115	.035	.202	.111	.034	.193	.107	.033		
4.0	.217	.113	.033	.211	.111	.033	.202	.107	.032	.193	.103	.031	.184	.100	.030		
5.0	.204	.104	.030	.199	.102	.030	.191	.099	.029	.183	.096	.029	.175	.094	.028		
6.0	.192	.096	.028	.188	.095	.027	.180	.092	.027	.173	.090	.026	.166	.087	.026		
7.0	.181	.090	.025	.178	.088	.025	.170	.086	.025	.164	.084	.024	.158	.082	.024		
8.0	.171	.084	.023	.168	.083	.023	.161	.081	.023	.155	.079	.023	.150	.077	.022		
9.0	.162	.078	.022	.159	.077	.022	.153	.076	.021	.148	.074	.021	.142	.072	.021		
10.0	.153	.073	.020	.150	.073	.020	.145	.071	.020	.140	.070	.020	.136	.068	.020		

pcc	80%			70%			50%			30%			10%			0	
pw	50%	30%	10%	50%	30%	10%	50%	30%	10%	50%	30%	10%	50%	30%	10%	0	
pfc	20%			20%			20%			20%			20%			0	
RCR	RCR:Room Cavity Ratio						Ceiling Cavity Exitance Coefficients(CCEC)										
0.0	.208	.208	.208	.178	.178	.178	.121	.121	.121	.070	.070	.070	.022	.022	.022		
1.0	.194	.174	.157	.166	.150	.135	.113	.103	.093	.065	.060	.054	.021	.019	.018		
2.0	.183	.150	.122	.157	.129	.105	.108	.089	.074	.062	.052	.043	.020	.017	.014		
3.0	.174	.132	.098	.150	.114	.085	.103	.079	.060	.059	.046	.035	.019	.015	.011		
4.0	.167	.118	.081	.143	.102	.070	.098	.071	.050	.057	.042	.029	.018	.014	.010		
5.0	.160	.108	.069	.137	.093	.060	.094	.065	.042	.055	.038	.025	.018	.012	.008		
6.0	.153	.099	.060	.132	.086	.052	.091	.060	.037	.053	.035	.022	.017	.012	.007		
7.0	.147	.092	.054	.126	.080	.047	.087	.056	.033	.051	.033	.020	.016	.011	.007		
8.0	.141	.086	.049	.121	.075	.042	.084	.053	.030	.049	.031	.018	.016	.010	.006		
9.0	.136	.081	.045	.117	.071	.039	.081	.050	.028	.047	.029	.017	.015	.010	.005		
10.0	.130	.077	.042	.112	.067	.036	.078	.047	.026	.045	.028	.015	.015	.009	.005		

C Range: 0 - 360DEG  
C Interval: 22.5DEG  
Test Speed: HIGH  
Temperature: 28DEG  
Operators: CJY  
Test Date: 2024-08-28

γ Range: 0 - 180DEG  
γ Interval: 1.0DEG  
Test System: EVERFINE GO-2000B\_V1 SYSTEM V2.0.401  
Humidity: 65.0%  
Test Distance: 5.190m [K=1.0000]  
Remarks:

TLO020-51 36V500mA CXA1820-30G-H-NOY 66.8D 3000K CRI90 NA

UGR(Unified Glare Rating) Table

NAME: TLO020-51					TYPE: 66.8D					WEIGHT: 1				
SPEC.: 3000K CRI90					DIM.:					SERIAL No.:				
MFR.:					SUR.: 72					Shielding Angle:				
ceiling/cavity	0.7	0.7	0.5	0.5	0.3	0.7	0.7	0.5	0.5	0.3				
walls	0.5	0.3	0.5	0.3	0.3	0.5	0.3	0.5	0.3	0.3				
working plane	0.2	0.2	0.2	0.2	0.2	0.2	0.2	0.2	0.2	0.2				
Room dimensions					Viewed crosswise					Viewed endwise				
x = 2H y = 2H					21.2	22.5	21.5	22.8	23.0	18.5	19.8	18.8	20.0	20.3
3H					22.0	23.2	22.3	23.4	23.7	19.3	20.6	19.7	20.8	21.1
4H					22.2	23.3	22.5	23.6	23.9	19.6	20.7	19.9	21.0	21.3
6H					22.2	23.3	22.6	23.6	23.9	19.7	20.8	20.1	21.1	21.4
8H					22.2	23.3	22.6	23.6	23.9	19.7	20.8	20.1	21.1	21.4
12H					22.2	23.2	22.6	23.5	23.9	19.7	20.7	20.1	21.0	21.4
4H 2H					21.3	22.4	21.6	22.7	23.0	18.9	20.1	19.3	20.4	20.7
3H					22.1	23.1	22.5	23.4	23.8	19.9	20.9	20.3	21.2	21.6
4H					22.4	23.3	22.8	23.7	24.0	20.3	21.1	20.7	21.5	21.9
6H					22.6	23.3	23.0	23.7	24.1	20.5	21.2	20.9	21.6	22.0
8H					22.6	23.3	23.0	23.7	24.1	20.5	21.2	20.9	21.6	22.0
12H					22.6	23.2	23.0	23.7	24.1	20.5	21.2	21.0	21.6	22.0
8H 4H					22.4	23.1	22.8	23.5	23.9	20.3	21.1	20.8	21.5	21.9
6H					22.6	23.2	23.1	23.6	24.1	20.6	21.2	21.1	21.7	22.1
8H					22.7	23.2	23.2	23.6	24.1	20.7	21.2	21.2	21.7	22.2
12H					22.7	23.1	23.2	23.6	24.1	20.7	21.2	21.2	21.7	22.2
12H 4H					22.4	23.0	22.8	23.4	23.9	20.3	21.0	20.8	21.4	21.9
6H					22.6	23.1	23.1	23.6	24.1	20.6	21.1	21.1	21.6	22.1
8H					22.6	23.1	23.2	23.6	24.1	20.7	21.1	21.2	21.6	22.2
Variations with the observer position at spacings:														
S = 1.0H					+ 1.4 / - 0.6					+ 0.4 / - 0.5				
1.5H					+ 2.3 / - 1.3					+ 0.1 / - 0.2				
2.0H					+ 2.5 / - 1.6					+ 0.5 / - 0.6				

CIE Pub.117, 1396 lm Total Lamp Luminous Flux Correct ( $8\log(F/F_0) = 1.2$ )

C Range: 0 - 360DEG  
C Interval: 22.5DEG  
Test Speed: HIGH  
Temperature: 28DEG  
Operators: CJY  
Test Date: 2024-08-28

$\gamma$  Range: 0 - 180DEG  
 $\gamma$  Interval: 1.0DEG  
Test System: EVERFINE GO-2000B\_V1 SYSTEM V2.0.401  
Humidity: 65.0%  
Test Distance: 5.190m [K=1.0000]  
Remarks:

NAME: TLO020-51	TYPE: 66.8D	WEIGHT: 1
SPEC.: 3000K CRI90	DIM.:	SERIAL No.:
MFR.:	SUR.: 72	Shielding Angle:

REFLECTANCE										
Ceiling	0.8	0.8	0.8	0.7	0.7	0.7	0.5	0.5	0.5	0
Walls	0.7	0.5	0.3	0.7	0.5	0.3	0.7	0.5	0.3	0
Working plane	0.2	0.2	0.2	0.2	0.2	0.2	0.2	0.2	0.2	0
ROOM INDEX	UTILIZATION FACTORS (PERCENT) $k(RI) \times RCR = 5$									
$k = 0.60$	64	53	47	63	53	47	62	53	47	41
0.80	74	64	58	73	64	57	71	63	57	51
1.00	83	73	67	81	73	67	79	73	66	60
1.25	89	81	75	88	80	74	85	78	73	67
1.50	94	86	80	92	85	80	89	83	78	71
2.00	100	93	88	98	92	87	94	89	85	78
2.50	103	97	92	101	95	91	97	92	89	81
3.00	106	100	96	103	98	94	99	95	92	84
4.00	109	104	100	106	102	99	102	99	96	87
5.00	110	107	103	108	105	102	103	101	98	89
ROOM INDEX	UF(total)									Direct
According to DIN EN 13032-2 2004 <span style="margin-left: 100px;">Suspended</span> <span style="float: right;">SHR<sub>NOM</sub> = 1.25</span>										

```

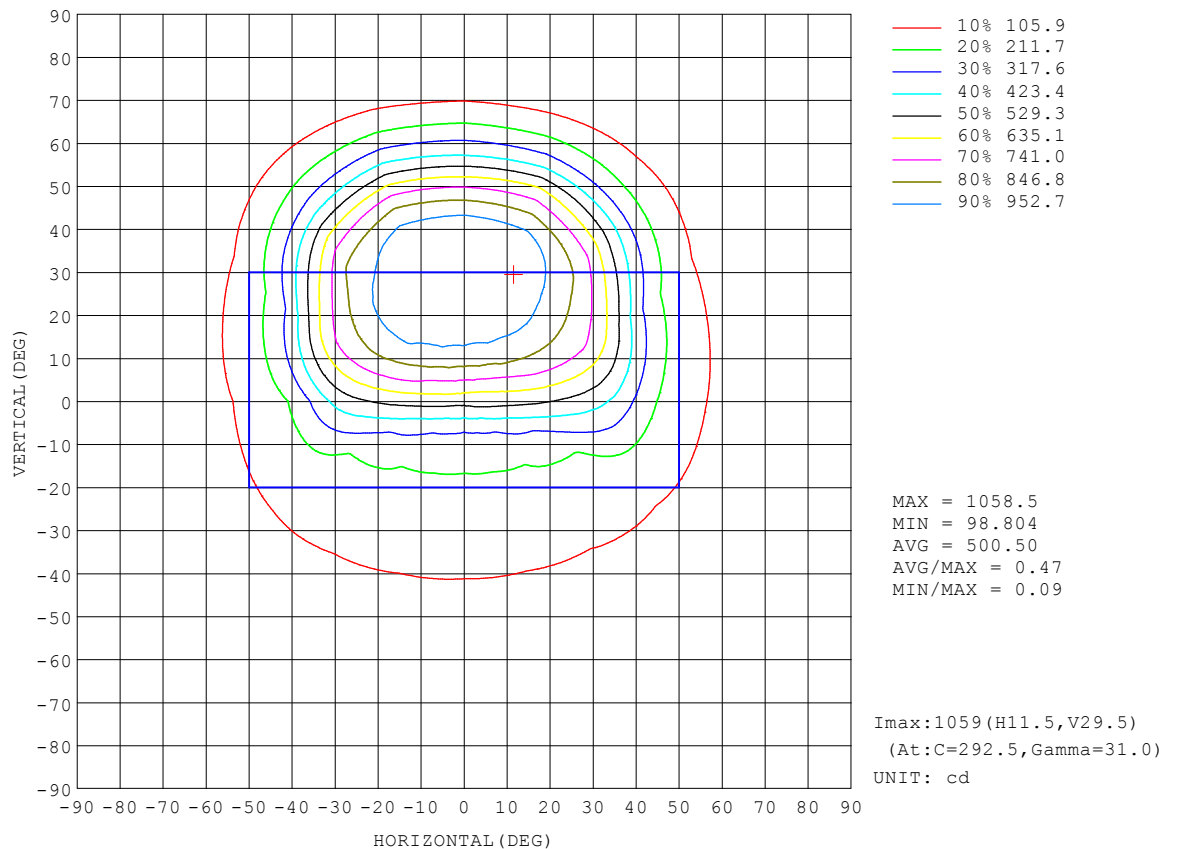
Range: 0 - 180DEG
Interval: 1.0DEG
Test System:EVERFINE GO-2000B_V1 SYSTEM V2.0.401
Humidity:65.0%
Test Distance:5.190m [K=1.0000]
Remarks:

```

TLO020-51 36V500mA CXA1820-30G-H-NOY 66.8D 3000K CRI90 NA

## ISOCANDELA DIAGRAM

NAME: TLO020-51	TYPE: 66.8D	WEIGHT: 1
SPEC.: 3000K CRI90	DIM.:	SERIAL No.:
MFR.:	SUR.: 72	Shielding Angle:



C Range: 0 - 360DEG  
C Interval: 22.5DEG  
Test Speed: HIGH  
Temperature: 28DEG  
Operators: CJY  
Test Date: 2024-08-28

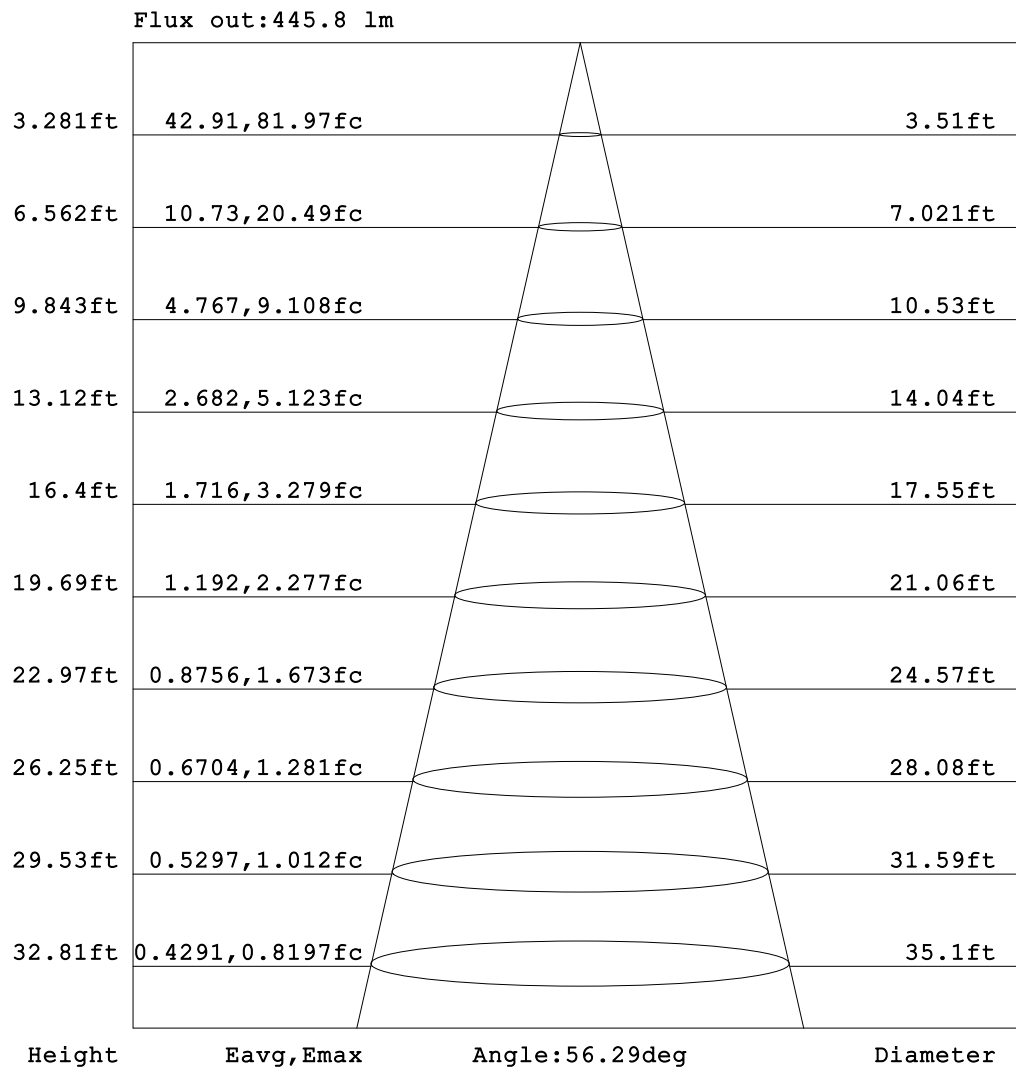
$\gamma$  Range: 0 - 180DEG  
 $\gamma$  Interval: 1.0DEG  
Test System: EVERFINE GO-2000B\_V1 SYSTEM V2.0.401  
Humidity: 65.0%  
Test Distance: 5.190m [K=1.0000]  
Remarks:



TLO020-51 36V500mA CXA1820-30G-H-NOY 66.8D 3000K CRI90 NA

### AAI Figure

NAME: TLO020-51	TYPE: 66.8D	WEIGHT: 1
SPEC.: 3000K CRI90	DIM.:	SERIAL No.:
MFR.:	SUR.: 72	Shielding Angle:



Note: The Curves indicate the illuminated area and the average illumination when the luminaire is at different distance.

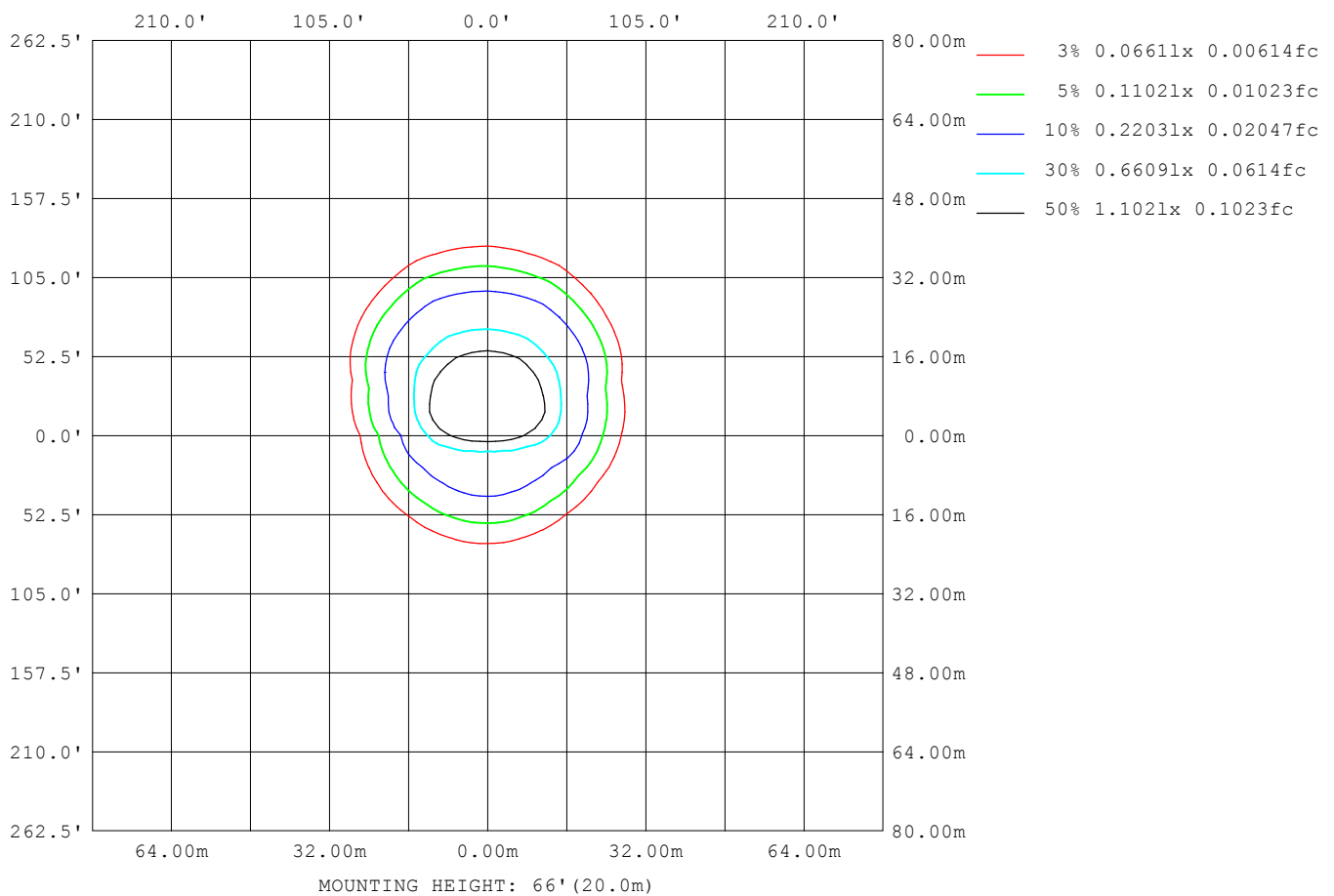
C Range: 0 - 360DEG  
 C Interval: 22.5DEG  
 Test Speed: HIGH  
 Temperature: 28DEG  
 Operators: CJY  
 Test Date: 2024-08-28

γ Range: 0 - 180DEG  
 γ Interval: 1.0DEG  
 Test System: EVERFINE GO-2000B\_V1 SYSTEM V2.0.401  
 Humidity: 65.0%  
 Test Distance: 5.190m [K=1.0000]  
 Remarks:

TLO020-51 36V500mA CXA1820-30G-H-NOY 66.8D 3000K CRI90 NA

### ISOLUX DIAGRAM

NAME: TLO020-51	TYPE: 66.8D	WEIGHT: 1
SPEC.: 3000K CRI90	DIM.:	SERIAL No.:
MFR.:	SUR.: 72	Shielding Angle:



C Range: 0 - 360DEG  
C Interval: 22.5DEG  
Test Speed: HIGH  
Temperature: 28DEG  
Operators: CJY  
Test Date: 2024-08-28

γ Range: 0 - 180DEG  
γ Interval: 1.0DEG  
Test System: EVERFINE GO-2000B\_V1 SYSTEM V2.0.401  
Humidity: 65.0%  
Test Distance: 5.190m [K=1.0000]  
Remarks:

TLO020-51 36V500mA CXA1820-30G-H-NOY 66.8D 3000K CRI90 NA

### LED Avg.L Report

NAME: TLO020-51	TYPE: 66.8D	WEIGHT: 1
SPEC.: 3000K CRI90	DIM.:	SERIAL No.:
MFR.:	SUR.: 72	Shielding Angle:

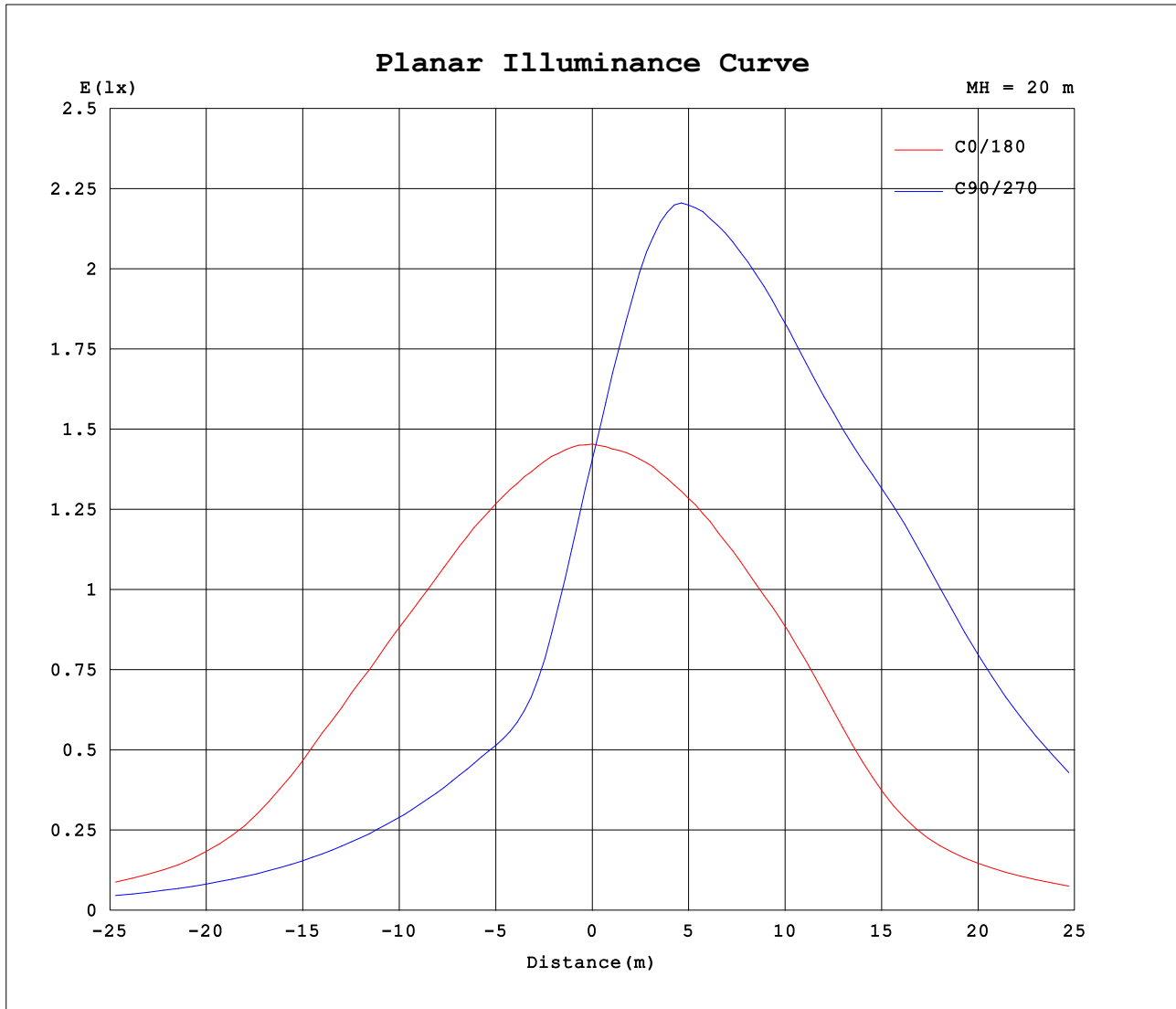
AvgL	cd/m2
L_0~180 (65) av	29560
L_0~180 (75) av	15409
L_0~180 (85) av	5189
L_90~270 (65) av	70834
L_90~270 (75) av	26658
L_90~270 (85) av	4531
L_45 (65) av	46611
L_45 (75) av	19729
L_45 (85) av	5083

Standard: GB/T 29293-2012

C Range: 0 - 360DEG  
C Interval: 22.5DEG  
Test Speed: HIGH  
Temperature: 28DEG  
Operators: CJY  
Test Date: 2024-08-28

γ Range: 0 - 180DEG  
γ Interval: 1.0DEG  
Test System: EVERFINE GO-2000B\_V1 SYSTEM V2.0.401  
Humidity: 65.0%  
Test Distance: 5.190m [K=1.0000]  
Remarks:

### Planar Illuminance Curve



C Range: 0 - 360DEG  
 C Interval: 22.5DEG  
 Test Speed: HIGH  
 Temperature: 28DEG  
 Operators: CJY  
 Test Date: 2024-08-28

γ Range: 0 - 180DEG  
 γ Interval: 1.0DEG  
 Test System: EVERFINE GO-2000B\_V1 SYSTEM V2.0.401  
 Humidity: 65.0%  
 Test Distance: 5.190m [K=1.0000]  
 Remarks:

TLO020-51 36V500mA CXA1820-30G-H-NOY 66.8D 3000K CRI90 NA

## LUMINOUS DISTRIBUTION INTENSITY DATA

NAME: TLO020-51	TYPE: 66.8D	WEIGHT: 1
SPEC.: 3000K CRI90	DIM.:	SERIAL No.:
MFR.:	SUR.: 72	Shielding Angle:

Table--1

UNIT: cd

C (DEG) γ (DEG)	0	22.5	45	67.5	90	112.5	135	157.5	180	202.5	225	247.5	270	292.5	315	337.5			
0	570	570	570	570	570	570	570	570	570	570	570	570	570	570	570	570			
5	565	497	436	401	389	404	442	502	566	635	699	738	752	733	694	631			
10	555	419	317	273	264	278	327	432	559	701	821	889	910	880	812	693			
15	540	345	245	225	224	228	251	364	550	764	919	966	984	960	905	745			
20	520	280	213	199	196	202	219	298	530	796	961	1002	1017	1001	941	777			
25	492	232	188	173	171	177	195	245	498	799	974	1027	1035	1038	941	781			
30	453	199	164	150	149	154	171	208	439	762	957	1039	1031	1060	915	756			
35	394	174	142	129	130	133	149	180	331	672	920	1033	1035	1050	881	674			
40	295	149	121	111	112	114	127	155	223	505	860	1001	1029	993	819	518			
45	205	125	102	93.9	94.8	96.9	108	131	163	336	739	903	914	871	689	347			
50	149	102	84.2	77.9	79.1	80.7	89.5	107	127	227	561	740	741	710	508	225			
55	112	81.3	67.1	62.9	64.2	65.4	72.0	85.5	96.5	159	368	523	520	492	324	155			
60	83.3	61.6	50.8	48.8	50.4	51.2	55.7	65.4	68.9	108	231	336	341	302	197	104			
65	57.0	43.3	35.9	35.0	37.2	37.8	40.6	46.5	44.6	67.3	133	195	206	172	111	65.0			
70	35.8	28.5	23.9	23.4	24.8	25.7	27.3	30.4	26.0	37.1	67.9	96.5	104	82.7	56.6	35.9			
75	19.9	16.9	14.2	14.4	15.0	16.0	16.7	18.0	12.6	16.6	28.9	39.3	41.2	31.9	23.4	16.3			
80	9.14	8.51	6.98	7.32	7.67	8.43	8.62	9.13	4.66	5.18	8.14	10.3	10.5	7.23	5.72	5.19			
85	2.94	3.08	2.44	2.60	2.69	3.18	3.39	3.37	0.74	0.70	0.83	0.61	0.53	0.49	0.55	0.74			
90	0.58	0.81	1.38	1.78	1.95	1.74	1.39	0.96	0.62	0.48	0.45	0.43	0.47	0.47	0.53	0.59			
95	0.76	1.19	2.10	2.68	2.94	2.61	2.10	1.39	0.85	0.64	0.58	0.54	0.58	0.59	0.68	0.77			
100	1.05	1.76	3.04	3.81	4.20	3.73	3.05	2.01	1.19	0.84	0.73	0.69	0.72	0.75	0.85	1.01			
105	1.47	2.50	4.15	5.11	5.62	5.06	4.16	2.84	1.67	1.09	0.92	0.86	0.89	0.93	1.06	1.30			
110	2.02	3.39	5.35	6.50	7.14	6.48	5.42	3.82	2.28	1.41	1.13	1.05	1.09	1.14	1.31	1.69			
115	2.69	4.38	6.60	7.91	8.70	7.96	6.75	4.91	2.98	1.83	1.39	1.27	1.31	1.37	1.60	2.18			
120	3.44	5.40	7.80	9.25	10.2	9.38	8.10	6.05	3.74	2.34	1.70	1.52	1.55	1.64	1.96	2.79			
125	4.23	6.39	8.87	10.5	11.6	10.7	9.36	7.20	4.55	2.92	2.07	1.80	1.83	1.93	2.41	3.49			
130	5.04	7.29	9.72	11.5	12.7	11.9	10.4	8.28	5.38	3.58	2.52	2.12	2.14	2.29	2.97	4.28			
135	5.85	8.02	10.3	12.2	13.5	12.7	11.3	9.24	6.18	4.27	3.08	2.53	2.51	2.76	3.64	5.12			
140	6.61	8.56	10.6	12.6	14.1	13.3	11.9	10.03	6.89	5.04	3.75	3.08	3.01	3.39	4.44	6.05			
145	7.29	8.89	10.7	12.7	14.3	13.5	12.3	10.7	7.48	5.83	4.54	3.82	3.70	4.19	5.35	7.01			
150	7.81	9.04	10.7	12.6	14.1	13.6	12.7	11.2	7.93	6.63	5.45	4.74	4.63	5.18	6.36	7.97			
155	8.19	9.18	10.9	12.7	14.0	13.7	12.9	11.6	8.32	7.38	6.47	5.83	5.80	6.30	7.46	8.89			
160	8.56	9.52	11.2	12.7	13.9	13.8	13.1	12.1	8.83	8.05	7.52	7.06	7.12	7.59	8.62	9.82			
165	9.18	10.1	11.5	12.7	13.7	13.7	13.3	12.6	9.54	8.80	8.52	8.32	8.53	8.90	9.77	10.7			
170	9.90	10.6	11.6	12.5	13.2	13.4	13.5	13.0	10.2	9.67	9.48	9.50	9.89	10.2	10.9	11.6			
175	10.6	11.0	11.7	12.1	12.7	13.1	13.4	13.2	10.8	10.5	10.5	10.6	11.1	11.4	12.0	12.3			
180	11.0	11.1	11.4	11.5	12.1	12.4	12.9	13.0	11.1	11.0	11.4	11.5	12.1	12.4	12.9	12.9			

C Range: 0 - 360DEG  
C Interval: 22.5DEG  
Test Speed: HIGH  
Temperature: 28DEG  
Operators: CJY  
Test Date: 2024-08-28

γ Range: 0 - 180DEG  
γ Interval: 1.0DEG  
Test System: EVERFINE GO-2000B\_V1 SYSTEM V2.0.401  
Humidity: 65.0%  
Test Distance: 5.190m [K=1.0000]  
Remarks: